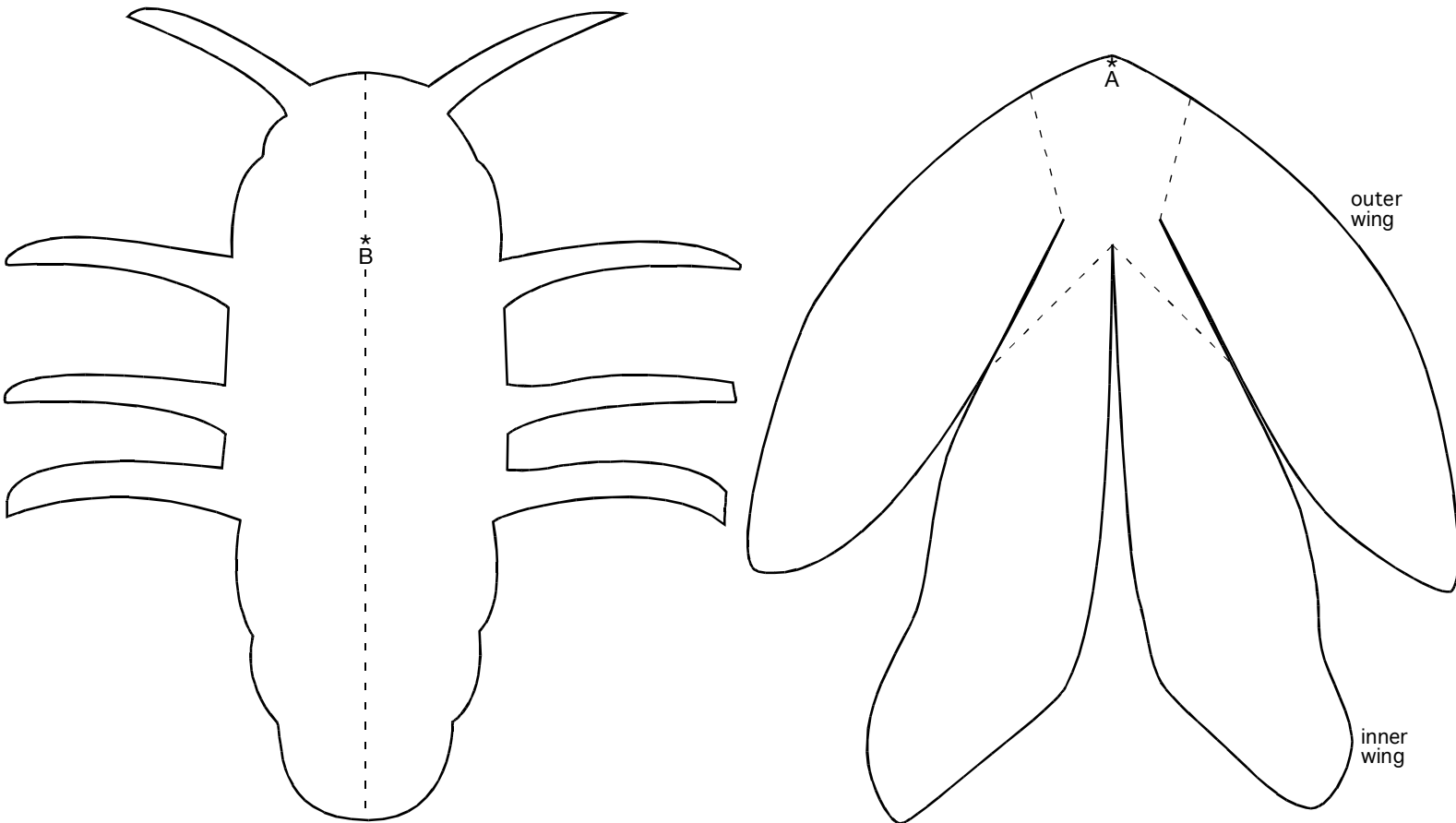


DENISE FLEMING'S
beetle bop

P A P E R C R A F T



lightening beetle

1. Cut on solid lines.
2. Fold body down on dotted line, then unfold.
3. Fold outer wings up on dotted line.
4. Fold inner wings up and under outer wings.
5. Place wings on top of body and align Point A with Point B — staple.
6. Curve or bend antenna and wings as desired.

TIPS

- Color beetle before you cut out.
- Leave inner wings white otherwise it will look like a butterfly.